

THE SIDE PANNIERS KIT

The "side panniers" kit includes:

- A) 1 RH side pannier.
- B) 1 LH side pannier.
- C) 2 keys for side panniers lock.
- D) 1 RH side pannier bracket with turn indicator.
- E) 1 LH side pannier bracket with turn indicator.
- F) 4 collar-head screws M8x12. USAGE: used to fasten brackets to frame.
- G) 2 socket head screws M8x18. USAGE: used to fasten brackets to pillion rider bracket.
- H) 1 socket head screw M8x40. USAGE: fastens LH silencer to pillion rider footpeg lug.
- I) 1 spacer. USAGE: fastens LH silencer to pillion rider footpeg lug.
- J) 2 blanking plugs Ø 8.5. USAGE: closes hole for indicator cable in number plate holder.
- K) 2 blanking plugs Ø 6.5. USAGE: closes hole for indicator fastening screw in number plate holder.
- L) 13 mm socket wrench. USAGE: for screws ref. 6.
- M) 5 mm Allen wrench. USAGE: for screws ref. 7 and screw ref. 8.
- N) 8-10 mm hex. wrench. USAGE: For screws holding side panels to frame. To hold turn indicator check nut steady.
- O) 2 adhesive amber cat's eyes (see TAB. 1).
- P) 2 adhesive red cat's eyes (see TAB. 1).
- Q) 1 Instruction booklet.



Note

Besides the tools included in the kit, you will need a 4 mm Allen wrench in order to unscrew the screws (A) that hold the rear end of the side panels to the frame.



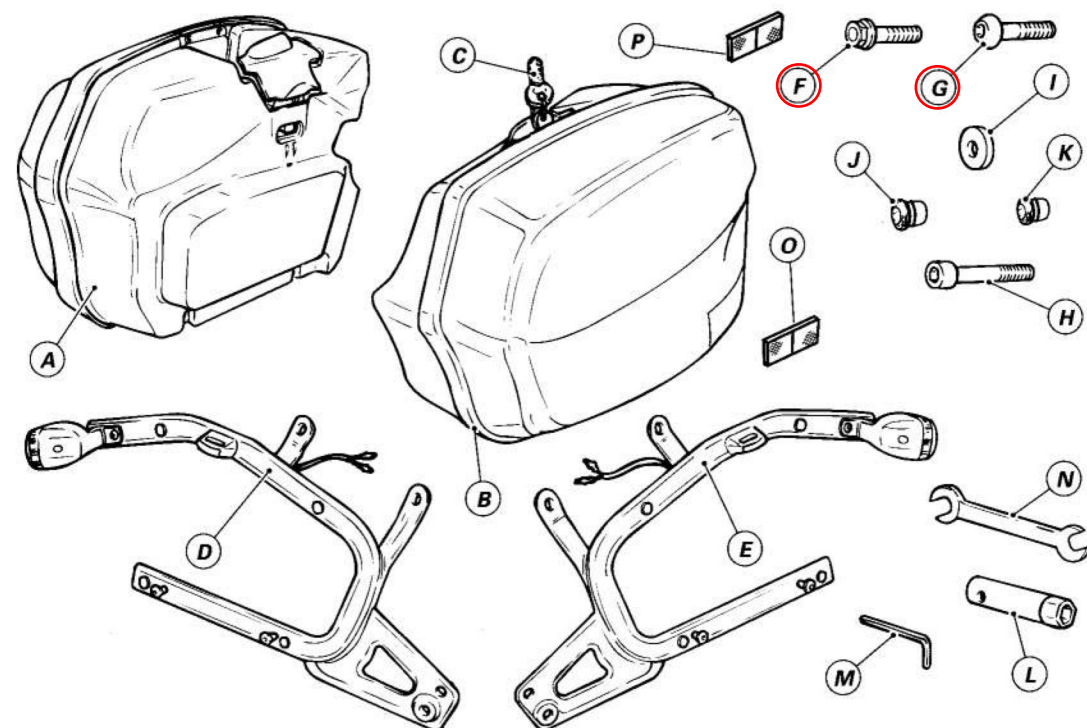
Important

Store away any parts removed and not refit when installing the side panniers for later use or when you want to bring the bike back to its original condition.



Note

Figures of this document are to be considered valid for all Sport Touring models.



Note

To make side pannier brackets assembly easier, it is necessary to unscrew by 2 turns screws (1) securing pillion rider footpeg lugs to the frame.

To install the RH (2; D page 5) and LH (3; E page 5) pannier brackets, fit the upper lugs into the slots provided in the compartment seal. Slide the lower lugs behind the lug that supports the pillion rider footpeg (4). Secure the upper lugs of the pannier brackets to the frame using the suitable screws (5; F page 5) and torque screws up to 23-25 Nm.

Route the turn indicator wire from the inside through the slot of the rear seal and connect it to the main wiring. Secure the wiring to the frame tube with straps (6) previously removed.

Fasten each pannier bracket with screw (7; G page 5) through the bottom hole in the footpeg supporting lug. Tighten screw to 23-25 Nm torque.

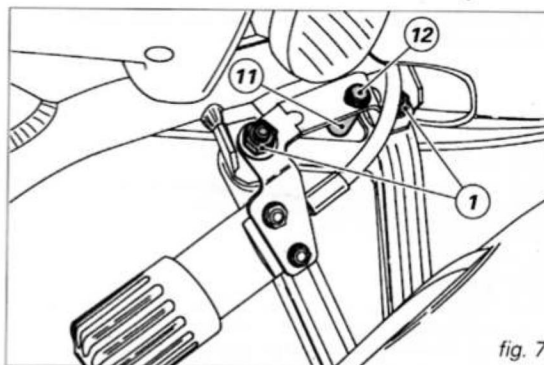


fig. 7

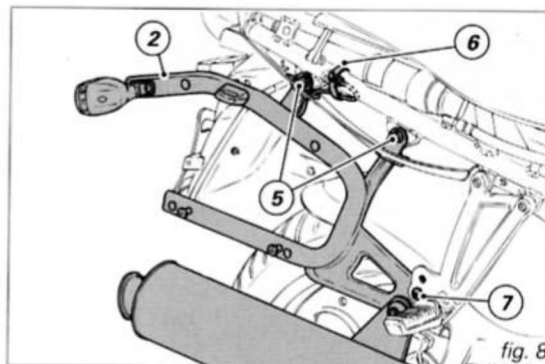


fig. 8

10

Important

Fit spacer (8; I page 5) between the two LH supports.

Fit the RH silencer onto the pannier bracket placing the spacer (9) and the two seals (10) in between. Secure them with screw (11) and torque screw up to 23-25 Nm.

Note

Screw (11; H page 5) is supplied together with side panniers kit.

Repeat the same operations for LH silencer.

Refit the side panels using the original fasteners.

Fit spacers (12) in the suitable position at the side panel securing holes and start screws (13) in their thread.

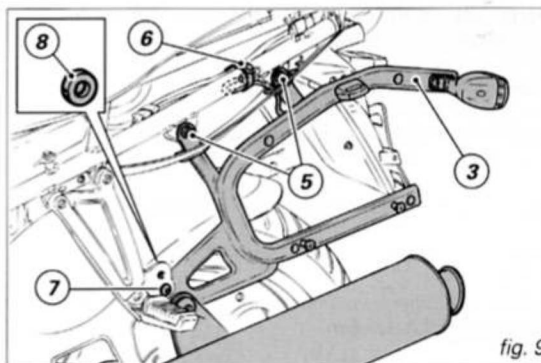


fig. 9

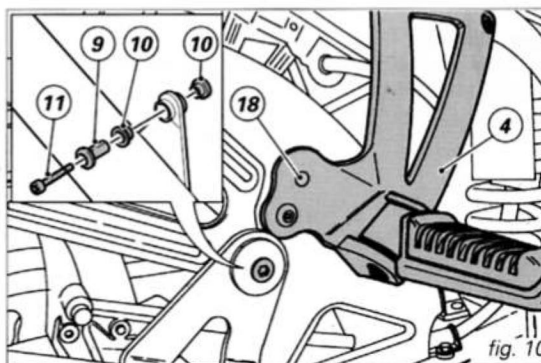


fig. 10

GB

11