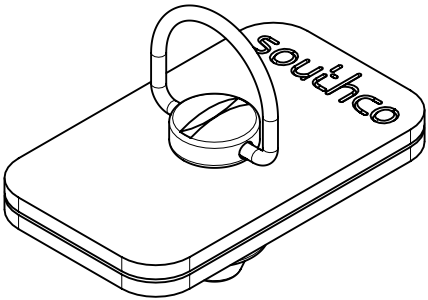
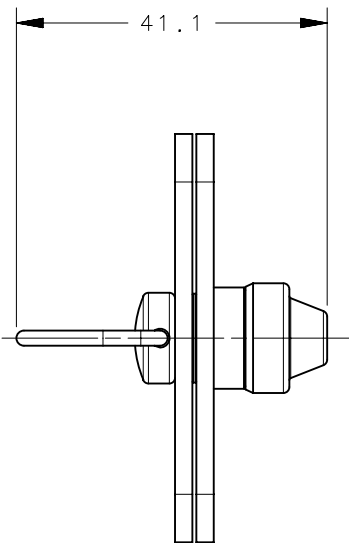
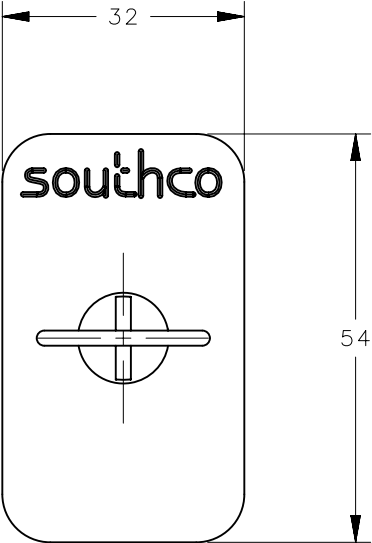
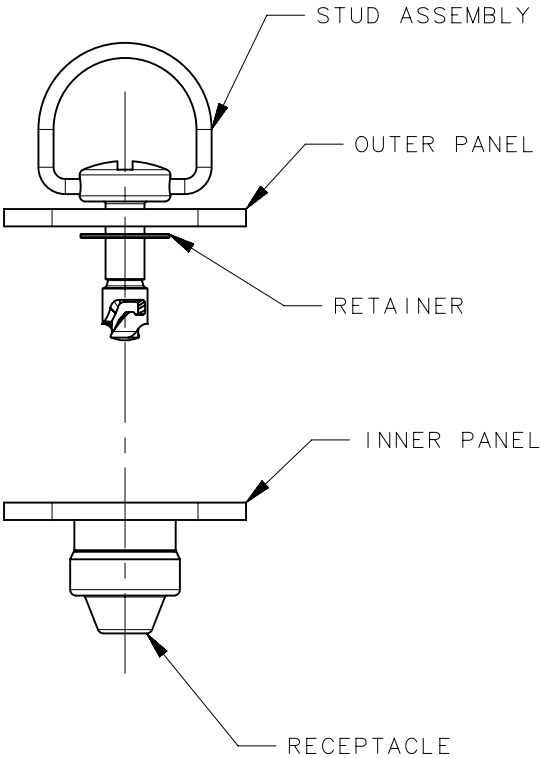
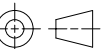


REVISION HISTORY			
REV	DATE	BY	DESCRIPTION
A	07JUN2014	JAJ/YGC	PRN: P2014-1122



SCALE 1 : 1

5	D8-326-100-040	1	RETAINER	POLYETHYLENE	
4	D8-336-110-190	1	RECEPTACLE ASSEMBLY	-	
3	D8-316-415-191	1	STUD ASSEMBLY	STEEL	
2	-	1	INNER PANEL	ALUMINUM	
1	-	1	OUTER PANEL	ALUMINUM	
-	28-D8-316-415	1	SAMPLE PANEL ASSEMBLY	-	
NO.	PART NUMBER	QTY	TYPE OF COMPONENT	MATERIAL	GENERAL NOTES

	THIRD ANGLE PROJECTION					southco® CONNECT • CREATE • INNOVATE			
	MILLIMETERS [IN]								
	TOLERANCES UNLESS OTHERWISE NOTED	DESCRIPTION							
	ALL DIMENSIONS WITHOUT TOLERANCES ARE FOR REFERENCE ONLY.	D8 QUARTER TURN ASSEMBLY SAMPLE PANEL							
PROPRIETARY ITEM EXCEPT FOR USES EXPRESSLY GRANTED IN WRITING, INFORMATION DISCLOSED HEREON IS CONFIDENTIAL AND ALL RIGHTS, PATENT AND OTHERWISE, ARE RESERVED BY SOUTHCO, INC.		SIZE A4	SYSTEM NX		DWG NO. J-28-D8-316-415				
	PER ASME Y14.5M-1994	DRAWN BY JAJ		DATE 06JUN2014		SCALE 1 : 1		SHEET 1 OF 1	

NOTES:
1. SAMPLE PANEL ASSEMBLY INCLUDES ONE D8 STUD ASSEMBLY, PRESS-IN-CLINCHING RECEPTACLE, AND RETAINER.