

ScanST installation and setup on an XP computer with a Lonelec cable and correct drivers and connection to a 15M ECU. It is also for the 16M, 59M and 5AM.

Version 2 – 3 May 2015

Richard Collins 2001 900SSie. AKA Punch on forums.

Got to Christian's web site here -

http://christian.giupponi.free.fr/HELP/SCAN_ST.HTM

Step 1 – download the software highlighted below.

Driver pour l'Interface ScanST [ScanST Driver](#)

Driver for OBDII-KKL VAG <http://www.ftdichip.com/Drivers/CDM/CDM%202.08.28%20WH>

Save the drivers and select it. All drivers must be manually installed.

Compatible Windows 2000, XP, Server 2003, Vista, Server 2008, Windows 7 and Server 200

Driver Windows 98, pour l'Interface [ScanSTUSB98](#)

missing files : [ScanSTbmp.zip](#) (Fixed in version 304)

Install to Windows 8.1 - *With the invaluable assistance of Nathan*
[\(Win 8.1\) ScanST Install Guide.pdf](#)

[ScanST 3.0.3 \(Portable\) 20141208.7z](#)

[Mode d'emploi](#) Mise à jour 22/03/2009

[Video](#) New

[3.0.4 09/12/2014](#)

[ScanST304](#)

Missing Bmp fixed

Faster acquisition

[3.0.3 16/03/2014](#)

[ScanST303](#)

[installScanST303](#) pour une installation complète. Elle est totalement free. Elle nécessite une
pendant l'installation, si Windows vous demande de mettre à jour des fichiers : dites NON

I created a folder in My Documents and named it ScanST, then dragged the three downloads into that folder. These download are Install, ScanST304 and scanstbmp.

Open scanstbmp the hit ctrl a to select the three bitmap files. Then ctrl c to Copy them all, then you can close that folder.

Open the Install folder then Open the Support folder. Now press ctrl v to paste the bitmaps.

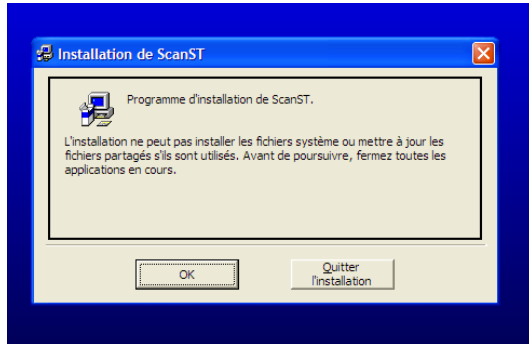
I used the Lonelec cable kit and followed their instructions for the correct ftdi drivers.

If you have Win 8 or want to change where the program is installed, download the (Win 8.1) ScanST Install Guide written by Impulsive Duc.

Step 2

Open the folder Install folder and double click on setup.exe

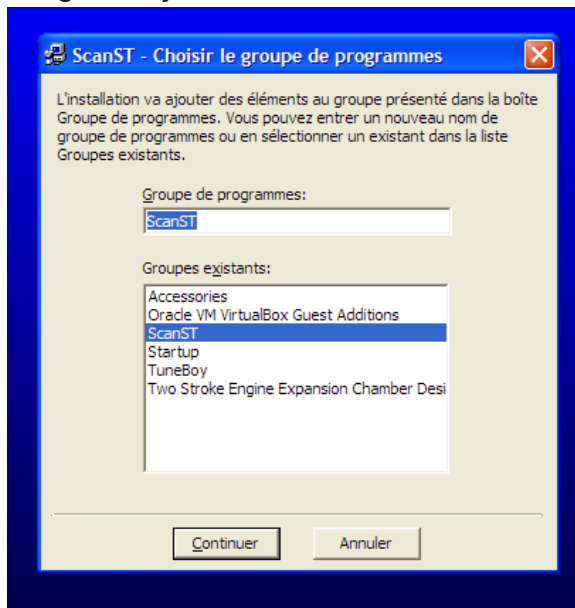
This tells you it is the installation of ScanST and to close all other open applications. Then OK to continue installation or Quitter to Cancel the installation.



Step 3

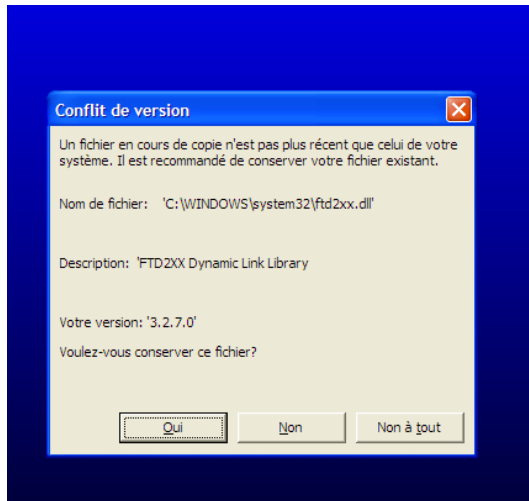
This part tells you the name of the program and where it is going to go.

You can rename it in the upper box, but I did not. Not sure why, but it says ScanST already existed as a Program group on mine. Maybe because I tried running a separate ScanST.exe file downloaded from the web site. Your computer will provide instructions, but if you are just doing a standard install to Programs, just click Continuer.

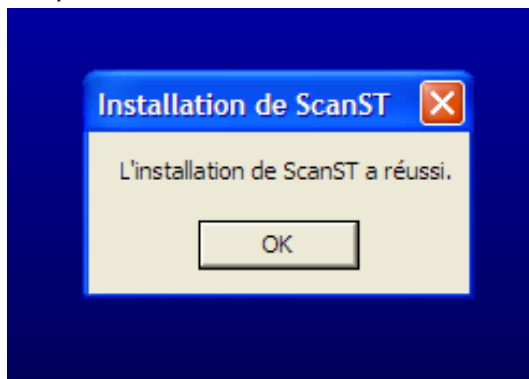


Step 4

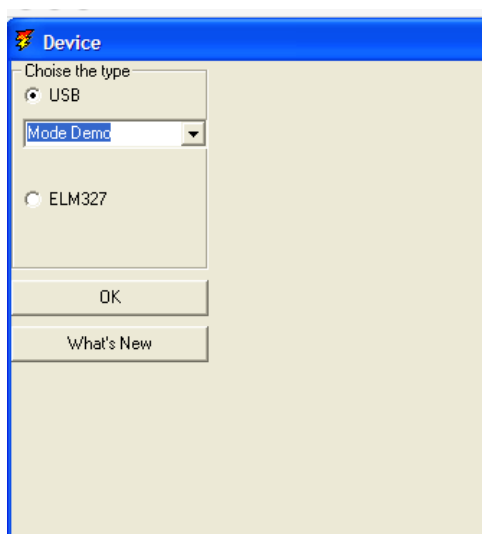
This screen is telling me there is a version conflict and in my case the file that ScanST wants to install is older than the one that exists in my XP. I clicked on Oui (yes) to keep my version. It did not happen for me, but you may see other conflicts and if so keep your version. Win 8.1 – see the downloadable instructions on the web site.



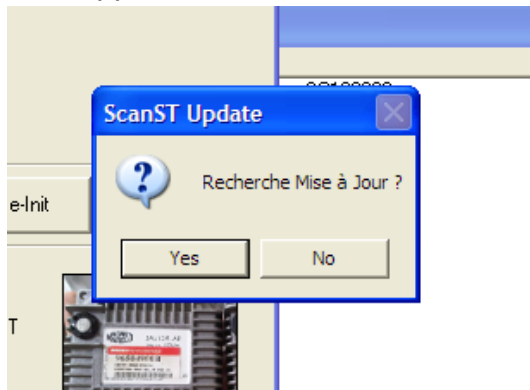
Step 5 – installation is about to start, so click OK.



When it is finished installing you have version 3.0.3 on your computer. When it opens with no cables connected it goes into a Demo mode. Choose your connection type that you will be using and Click OK.



Next this pops up, it is asking if you want to check for updates. Click OK. It will happen more than once, so click OK to each.

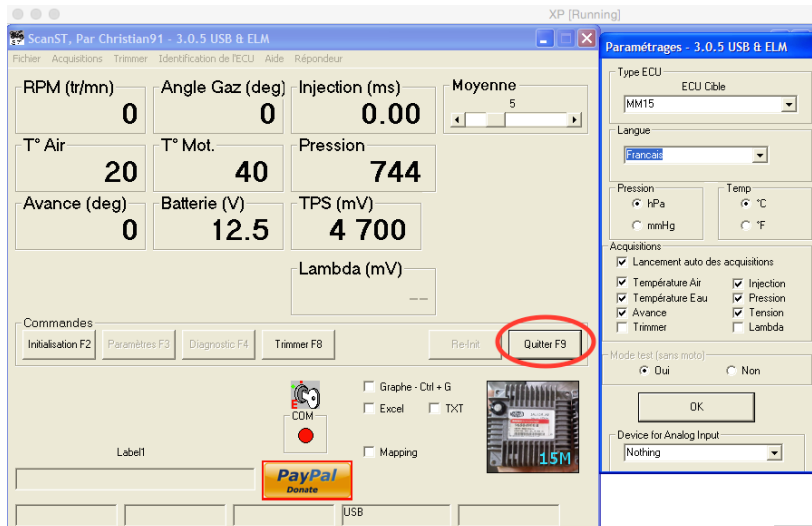


My update installed version 3.0.4 but using Start Programs ScanST at that time opens 3.0.3 not 3.0.4

Don't worry as you are going to upgrade to 3.0.5a and sort this out.

Now this may be changed by Christian, so check the version number at the top of the main screen. If it is not 3.0.5 follow the blue text, otherwise skip down to where the text is black again.

Close the software by clicking on F9 on the screen.



At the time of writing this, Christian has made available version 3.0.5a which you can download here <http://christian.giupponi.free.fr/maj/ScanST305a.exe> Put it in the ScanST folder in My Documents.

Now copy the file and paste it in C:\Program Files\ScanST. You get to this Program Files folder by clicking on Start, the right click on My Computer and select Explore. Then Local disk, Program Files, ScanST

Whilst still in that folder, right click the 305a.exe file and select Pin to start menu. Now when you click on Start it is there ready for you to select and all four languages are available.

Now go to the Start button and open ScanST either from the Pinned to Start menu or via Programs if where that points to has been fixed.

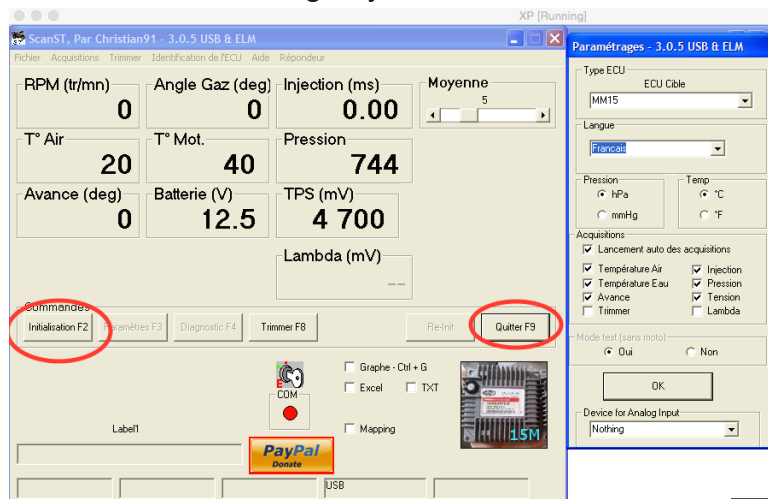
As there is no cable connected yet, it will open in Demo mode. Next to open is the Main screen and the Parameters page. Drag the parameters to the

right so you can see everything at once. At the top you select your ECU type. I did i these images before putting 3.0.5 in the Program folder, so only French was available the way I opened it. If you do as written above, you will have the choice of four languages.

Check the software version is 3.0.5

Eau it is coolant temperature on water cooled bikes and engine temperature on air cooled bikes. Avance is ignition advance. Pression is Air Pressure. Tension is Battery Voltage. Click OK.

This pic is from when I was connecting to my bike. At this stage the Initialisation F2 button will be greyed out. Click on F9 to close the program to move onto connecting to your ECU.



Connecting to your ECU

To initiate communication between ScanST and the ECU , it must initialize. ScanST does not need to be open yet and if it is open **and** in Demo Mode click on the screen F9 to quit the program.

According to Christian, ScanST performs a number of checks and his experience is that things not working are not due to his software. Most likely the wrong cable and/or wrong cable drivers.

- 1 Make sure the bike is off – do this with the key, not the stop/run switch.
- 2 Connect the cable to the bike's diagnostic port and it's power wires to the bike's battery.
- 3 Plug the cable's USB connector into the computer and wait until Windows does the ding dong sound to show the cable is connected.
- 4 Open Scan ST and wait for the communication link to be established. A successful communication link is shown by the Initialisation F2 key not being greyed out.

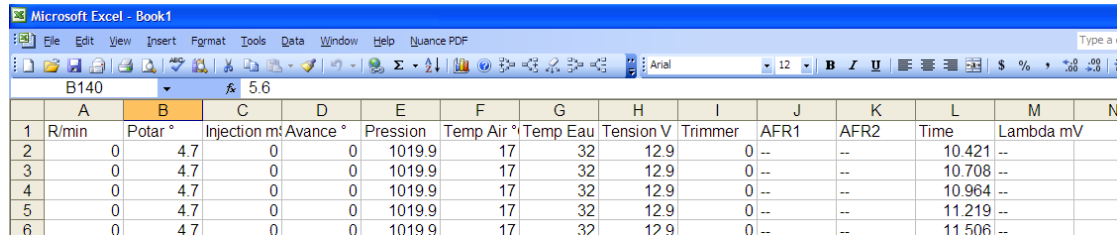
The rest is very simple and the on screen instructions are in French and English.

- 5 Click on F2 and a window pops up for you confirm the bike **key** is off. Click OK.
- 6 Next a pop up will ask you to switch on the bike. The LED on cable

interface will flicker briefly and if initialization is achieved, your computer will beep.

You now should be able to start using ScanST.

On the main screen there are other tick boxes for you to enable/disable. For example ticking Excel will automatically log data to an Excel workbook for you to analyse or whatever else. I have found on a Guzzi web site that "paul Daytona" has written an Excel macro that takes logged data and creates a file that can then be used in Logworks 3 for analysis, tuning etc.



	A	B	C	D	E	F	G	H	I	J	K	L	M	N
1	R/min	Potar °	Injection m	Avance °	Pression	Temp Air °	Temp Eau	Tension V	Trimmer	AFR1	AFR2	Time	Lambda mV	
2	0	4.7	0	0	1019.9	17	32	12.9	0	--	--	10.421	--	
3	0	4.7	0	0	1019.9	17	32	12.9	0	--	--	10.708	--	
4	0	4.7	0	0	1019.9	17	32	12.9	0	--	--	10.964	--	
5	0	4.7	0	0	1019.9	17	32	12.9	0	--	--	11.219	--	
6	0	4.7	0	0	1019.9	17	32	12.9	0	--	--	11.506	--	

Once I start using it, I will write a how to guide in English.